

covering the big picture



the commercial roller blind experts





Big, small, shaped, curved, vertical, horizontal, angled, manual, electric, automatic, screen, dim-out – whatever your screening or shading problem SHY have a solution.

You can rely on SHY's expert knowledge, state-of-the art UK manufacturing and testing facilities and extensive range of products, fabrics and operating methods.

For detailed advice, site surveys and installation you have access to the SHY Approved Dealer Network, a carefully selected and experienced network of independent dealers.



The SHY Zip range offers you the flexibility, ease of operation and durability unsurpassed by any other screen system available on the market.

The zip, which is attached to the side of the cloth, is permanently retained in the side channels yet still allows smooth operation of the blind, making the Zip system suitable for all your dim-out requirements.

But Zip is not only for dim-out blinds. By using an open mesh, Zip blinds are ideal insect screens and the side channels are also useful to guide blinds which are long and narrow or where a high degree of air movement would cause a traditional roller blind to sway.

Rooflight, sloping, tensioned and even curved blinds particularly benefit from the advantages of the Zip side channels retaining the cloth where intended with the minimum of fuss.





Sunfacta®

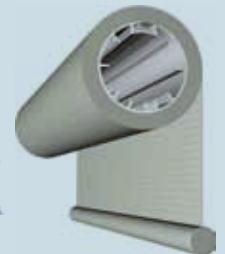
Sunfacta is a really neat roller blind for shading large areas or small. A headbox fully encloses the roller and the operating mechanism but simply hinges away for maintenance.

An extensive range of high-performance, flame retardant fabrics can be fitted to this, and other SHY systems, to meet your requirements and obligations in terms of heat and light control.

For the ultimate in light control a clever twin system, with two roller barrels neatly concealed in one headbox, allows the use of two types of cloth in one blind.



Obscura®



Obscura has the look of a standard roller blind but that's where the similarity ends.

Clever features like counter-balancing springs to make it as easy for you to raise the blind as lower it, brackets and fixings for virtually every conceivable situation and a maximum overall coverage of 70m² make this roller blind anything but standard.

As with Zip and Sunfacta, Obscura can be fitted at any angle and any pitch. They can even pull upwards and all blinds all have a range of operating methods to meet every application.

Zip, Sunfacta and Obscura systems are all available with the following operating methods depending on the overall size and orientation of the blind:

Hand

Simple, unobtrusive and ideal for small blind sizes.



Chain Operation

A standard roller blind method of operation, fitted with a self-braking gear box so you can simply position the blind where you need it.



Heavy Duty Chain Operation

For larger blind sizes, a counter-balancing spring concealed in the roller barrel means that raising the blind is as effortless as lowering it.



Crank Operation

Available with a permanently fixed winding handle or a removable one to prevent unauthorised use. Ideal for long drop blinds or where chains may pose a hazard.



Cord

The traditional way of manually operating blinds, also effective for roof blinds or blinds that lift upwards. Spring loaded barrels retract the blind.



Electric

With an electric motor fitted in the blind an extensive range of control options are available from wired to wireless (radio control) switching to environmental controls and links to building management systems.



For a truly customised finish we can arrange for your designs to be printed on your blinds.



SHY (UK), 1 Bilton Road Industrial Estate,
Cadwell Lane, Hitchin, Hertfordshire, SG4 0SB
T: 0845 67 20 000 F: 0845 67 20 001
E: info@shy.co.uk W: www.shy.co.uk

Your approved SHY dealer is:

© SHY (UK), 2011. SHY, Zip, Sunfacta and Obscura are registered trademarks. Many of the site photographs have been supplied by dealers and we are indebted to Incorporated Blind Systems Limited, BBD Blinds Limited and Enviroscreen Systems for allowing use of their images in this brochure.



Printed on recycled material